

**2014**

**2014 08**



.....2

.....6

.....8

.....10

.....23

.....30

.....



		( ) ( )
		2014 1 1 6 30
		“
		”

			002701

,Ltd.

10 10

306,670,000

10 10  
613,340,000

2014 7 4

\$1^ñ mtu ö!@ÛEm~É x#r° QQ /E=r"‰ ½Á ePxnàayÙp? \$ %|5%k  
<http://www.chinfo.com.cn> Tf6.72 0 Td4C48 Tc 7901CA04C301C94195080C1BCA

---

	2,694,727,114	2,242,362,162	20.17%
	423,334,506	307,212,125	37.80%
	302,880,080	212,587,881	

---

	-8,773	
	18,149,795	
	3,570,408	



2

	2,694,727,114	2,242,362,162	20.17%	
	1,857,400,713	1,599,113,198	16.15%	
	55,212,717	54,220,852	1.83%	
	192,816,152	137,101,404	40.64%	
	38,410,350	40,962,787	-6.23%	
	123,465,352	89,225,431	38.37%	
	57,028,297	33,913,621	68.16%	
	399,925,704	50,802,665	687.21%	

8f4VTX@GPÄ8

--	--	--	--	--	--	--

3

4

5

"

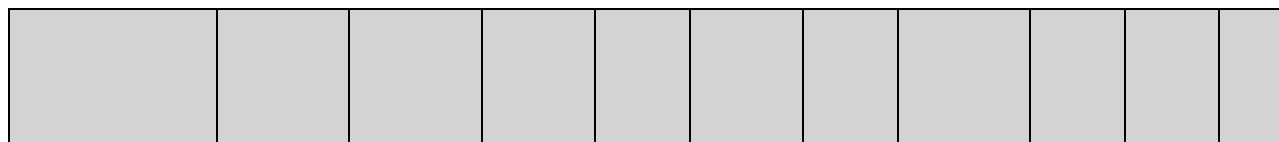
"

"

"

1

1



500,000 500,000 0.01% 500,000 0.01% 500,000 -

2

1

--	--	--	--	--	--	--	--	--	--	--	--	--

					2014	2014						
					10,000 06	10 07 24		-	-	50.63	23.01	

2

		( )		(1)		(2)	(3) (2)/(1)						
1.	4.8		9,451	8,701.45	-	8,701.45	100.00%	2012	03	01	5,815.03		

1.



	“ 300 220L ”			
	2013 5 31	4.8	9,451	2013 5 31
	8,701.45		749.55 (	628.09
	)			
	2013 6 27			
	(http://www.cninfo.com.cn)			

-272.81      43.9      ( )      11.85      2014      2014      1      328.56      2014  
 2014      4.8

3

	(1)	
--	-----	--

4

2014	2014 8 15	<a href="http://www.cninfo.com.cn">http://www.cninfo.com.cn</a>

4

				1,006	1,501,757,581.22	702,074,420.02	726,308,508.87	205,459,330.06	165,572,249.06

5

7	41,500.00	7,697.20	37,130.33	89.47%	2013 819.82
	45,963.65	7,589.72	40,147.33	87.35%	2013 8,669.20

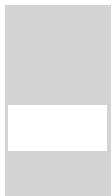
	215,114.48	52,840.29	143,040.52	--	--
		2012 12 14			
		2013 3 27			
		2014 2 12			
		2014 4 25			
		<a href="http://www.cninfo.com.cn">http://www.cninfo.com.cn</a>			

7

39




1









		<p>( )</p> <p>)</p> <p>( )</p> <p>( )</p> <p>( )</p> <p>( ) ( )</p> <p>"</p>	<p>( "</p> <p>( )</p>	<p>2011 04 20</p>	





2014 3 27

---

	24,364				-
		5%	10		

	LOF		
10			
		19,135,403	19,135,403
	LOF	12,000,000	12,000,000
		11,099,460	11,099,460
	LOF	9,905,098	







			-	-	-	-	-	-	-
			-	-	-	-	-	-	-
			-	-	-	-	-	-	-
			-	-	-	-	-	-	-
			-	-	-	-	-	-	-

		2014 02 27	
--	--	------------	--



1



---

4,917
-
7,094
4,418
5,507
6,557
1,319
-
5,591
9,862
-
5,005

**2**

	541,010,944	439,558,964
	-	-
	38,003,502	43,552,155
	593,057,236	513,079,299

---

	1,090,825,863	680,803,477
	-	-
	30,000,000	-

**3**

--	--	--

---

**4**

	1,249,377,497	1,214,840,466
	867,212,328	

---

	2,931,286,707	2,215,165,061
	27,381,951	21,222,570
	2,958,668,658	2,236,387,631
	1,898,572,000	1,730,139,816
	147,120,473	112,358,180
	290,004,505	195,677,930
	223,045,976	147,409,040
	2,558,742,954	2,185,584,966
	399,925,704	50,802,665

---

	1,422,985,276	853,861,706
	340,108,915	339,262,550
	-	-

## 6

	1,391,518,405	1,150,927,894
	-	-
	20,777,465	53,362,397
	1,412,295,870	1,204,290,291
	870,610,219	1,011,149,764
	86,347,763	68,213,585
	119,178,726	81,194,426
	147,187,390	56,428,375
	1,223,324,098	1,216,986,150
	188,971,772	-12,695,859
	985,166,166	22,330,853
	-	-
	-	1,095,362
	-	-
	-	-
	985,166,166	23,426,215
	40,230,374	65,533,117
	969,706,260	-
	274,450,000	305,000,000
	-	-
	1,284,386,634	370,533,117
	-299,220,468	-347,106,902
	-	-
	1,589,399,216	716,819,937
	-	-
	-	-
	1,589,399,216	716,819,937
	1,079,556,736	530,437,635

	325,101,867	319,783,773
	-	13,487,368
	1,404,658,603	863,708,776
	184,740,613	-146,888,839
	703	-
	74,492,620	-506,691,600
	425,488,551	1,382,086,940
	499,981,171	875,395,340

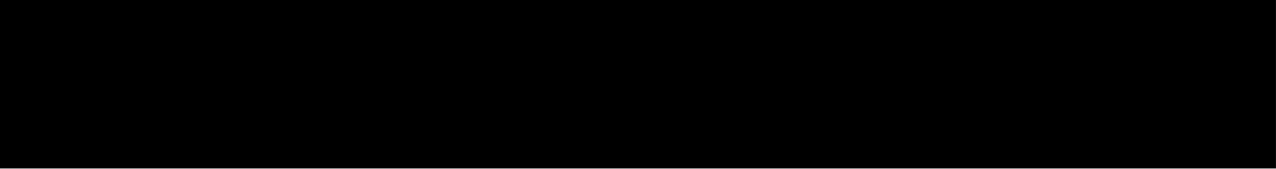


1	-	-	-	-	-	-	-	-	-	-
2	-	-	-	-	-	-	-	-	-	-
3	-	-	-	-	-	-	-306,670,000	-	-	-306,670,000
4	-	-	-	-	-	-	-	-	-	-
	306,670,000	-306,670,000	-	-	-	-	-	-	-	-
1	306,670,000	-306,670,000	-	-	-	-	-	-	-	-

	306,670,000	1,723,764,453	-	-	57,977,021	-	881,036,914	-769,101	1,826,412	2,970,505,699
	-	-	-	-	-	-	-	-	-	-
	-	-	-	-	-	-	-	-	-	-
	-	-	-	-	-	-	-	-	-	-
	-	-	-	-	-	-	-	-	-	-

2014

	-	-	-	-	-	-	-300,536,600	-	-	-300,536,600
1	-	-	-	-	-	-	-	-	-	-
	-	-	-	-	-	-				



8

	306,670,000	1,761,934,742	-	-	105,452,683	-	598,467,556	2,772,524,981
	-	-	-	-	-	-	-	-
	-	-	-	-	-	-	-	-
	-	-	-	-	-	-	-	-
	306,670,000	1,761,934,742	-	-	105,452,683	-	598,467,556	2,772,524,981
“ ”	306,670,000	-306,670,000	-	-	-	-	-160,707,104	-160,707,104

	306,670,000	-306,670,000	-	-	-	-	-	-	-
1	306,670,000	-306,670,000	-	-	-	-	-	-	-

	306,670,000	1,761,934,742						

1	-	-	-	-	-	-	-	-	-
2	-	-	-	-	-	-	-	-	-
3	-	-	-	-	-	-	-	-	-
4	-	-	-	-	-	-	-	-	-



2010 10  
 Limited " )  
 Corporation " )  
 " )

(Great Happy Group Holdings  
 (Harvest Investment Management  
 (Best Frontier Holdings Limited "  
 20.625%

8% 7% 5.625%

" " " "

0.995%

0.99%

0.005%

0.99%

8.25%

2010 11 19

( 2010 986 )  
 2010 12 28

2011 1 3

( 2011 6 )

2010 11 30 499,995,621 230,000,000

" "

2011 1 12

110000410122212

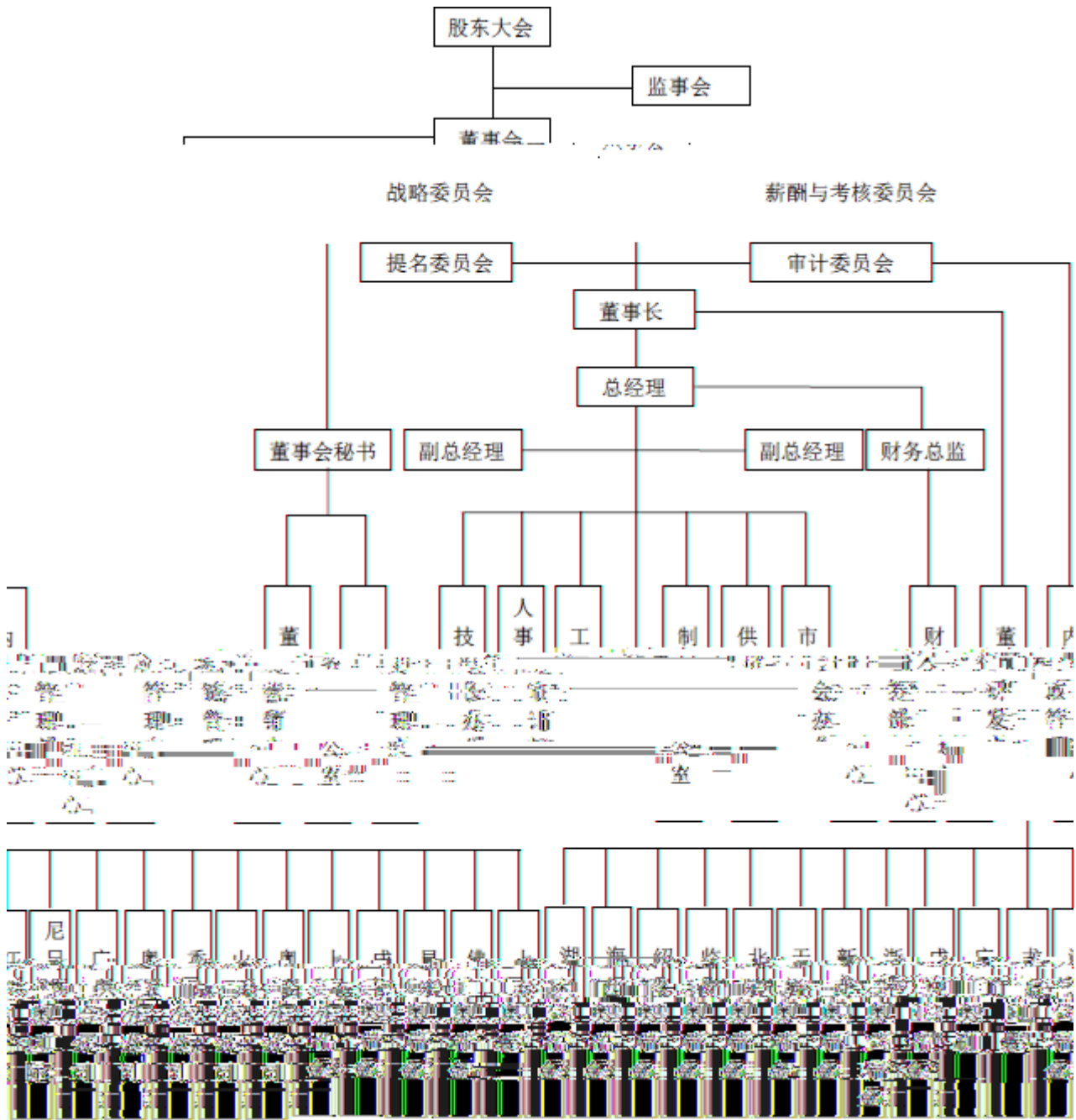
" [2012]856 "

7,667 21.60 /

2012 9 25

30,667

"



2011 1 12

2010



3,840	64%
2,100	35%
60	1%
6,000	100%

**3 2001 11**  
2001 2 23  
64%

2001 8 10

64%

89,808,000

3,840	64%
2,100	35%
60	1%
6,000	100%

**4 2003 12**  
2003 7 15

1%

1%

600,000

2003

11 4

[2003]84

1%

65%

35%

3,900	65%
2,100	35%
6,000	100%

**5 2004 4**  
2004 1 13

2,500

2002 2003

8,500

2004 4 13

Om\$hu@0%65.85 5trf4cvAbedi@0gA/(4bžPm\$6)@0gA/(4bV94Qa8BjA^XhgrBjA^XhgrBjA^W  
 5,525 65%  
 2,975 35%  
 8,500 100%

6 2007 12

2007 11 7

35%

35%

5,705,405

2008 1 17

2007 11 8

2007 12 3

[2007]74

2007 12 3

2007 12 3

110000410122212

5,525

65%

2,975

**8 2008 8**

2008 6 18

3.63% 440 20.625% 2500 33% 4,000  
 500 2008 6 18 4.125% 500 0.495% 60 4.125% 60  
 4.125% 500 0.495% 60 3.63% 440 2008 10 30  
 2008 7 25  
 164,848 0.02%  
 41,212 2008 9 17 2008 7 25 0.005%  
 2008 8 29 [2008]1334  
 2008 8 29

1	12,467.29	62.855%
2	4,090.97	20.625%
3	1,440.02	7.260%
4	818.19	4.125%
5	818.19	4.125%
6	196.37	0.990%
7	0.99	0.005%
8		

2010 9

1	12,269.93	61.860%
2	1,636.39	8.250%
3	1,586.80	8.000%
4		

1

2006 2 15

38  
(

" " )

15 (2010 )

2

6 30 2014

2014

2014

3

1 1 12 31

4

5

1

2

6

1

2



2

10

1

2014

2

3

- a.
- b.

A'G¥=aC { /EE  
L= `yG@ È x Z ÍA'G¥

4

5

5

0

1

	1,000,000

2

1	1	0%
1	2	10%
2	3	30%
3		100%

3


12

1

2

**3**

15

1

4

( ) ( )  
( )

5

16

1

2

3

17

1

3

2

3

---

2

	50	
	5	
	10	

3

4

5

6



25

26

1

2

3

4

27

1

2

28

1

29

1

**31**

**32**

**33**

**34**

**35**

**1**

2

2012

( GF201211000077)

2012 2014  
15%

2014

3

1

1

--	--	--	--	--	--	--	--	--	--	--

				50,000,000		50,000,000	-	100%	100%		-	-	-
				5,000,000		5,000,000	-	100%	100%		-	-	-
				50,000,000		50,000,000	-	100%	100%		-	-	-
				55,000,000		55,000,000	-	55%	55%		44,036,908	-820,065	-



3

2

3

97		370283230047572	2
88		320282000348595	9,000
200	7 5 203	110116016743921	
2014 00100	160	6277935000002144	

4

	198,815,405	-1,184,595
	88,155,503	-1,844,497
	1,974,982	-25,018
	-	-

5

6

7

8

9

**10**

	2014 6 30			2013 12 31		
ORG	1	=0.0382		1	=0.0378	

**1**

:	--	--	129,510	--		

**3****3****1**

	34,803,502	57,394,555
	10,000,000	-
	44,803,502	57,394,555

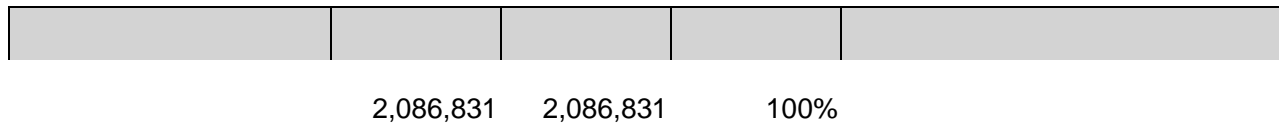
**2****3**

	2014 03 21	2014 09 19	13,000,000	
	2014 05 05	2014 11 05	13,000,000	

**5****1**

	-	230,137	-	230,137
	-	230,137	-	230,137

**2****6****1**

2

			300,000	300,000
	--	--	300,000	--

3

		2014 05 20	121,701		
	--	--	121,701	--	--

4

5% 5%

5 5



---

**7****1**


1	119,854,410	99.97%	-	10,501,269	99.66%	-
1 2	1,140	0.00%	57	1,140	0.01%	57
2 3	-	-	-	35,000	0.33%	35,000
3	35,000	0.03%	35,000	-	-	-
	119,890,550	--	35,057	10,537,409	--	35,057

	300,000	300,000	100%	
	490,000	490,000	100%	
	51,288	51,288	100%	
	841,288	841,288	--	--

2

3

4

5% 5%

5 5



8

1



**2**

	8,328,640	270,333	-	-	8,598,972
	4,266,506	2,233,636	-	146,250	6,353,893
	12,595,146	2,503,969	-	146,250	14,952,865

**3**

			-
			-

**10**

		196,400	
--	--	---------	--



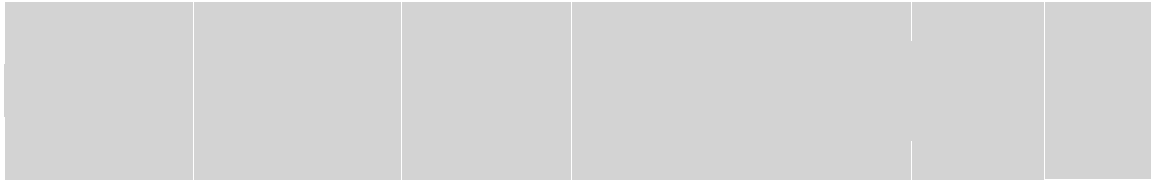
**16**

**1**





**2**



333,060,200

3

19

20

21

22

23

1

	234,344,122	1,357,778	36,500	235,665,400
	219,317,692	1,201,130	36,500	220,482,322
	14,111,847	140,346	-	14,252,193
	914,583	-	-	914,583

---

	-	272	-	272
	220,299,790	-1,797,333	36,500	218,465,957
	207,512,926	-1,217,121		206,259,305

26

1

	6,718,408	4,634,398
	1,492,696	678,084
	6,181,574	7,310,993
	948,794	

27

	11,780,089	245,076	300,000	121,701	11,603,464
	12,595,146	2,503,969	-	146,250	14,952,865

**30****31**

	30,000,000	-
	30,000,000	-

30,000,000

**32****1**

	683,211,851	545,789,793
	7,054,843	4,547,301
	690,266,694	550,337,094

**2****5% 5%****33****1**

	11,419,152	11,254,418

---

**2****5% 5%****34**

	43,915,118	105,338,475	112,591,577	36,662,016
	-	5,836,532	5,836,532	-

	2,783,367	2,421,471
	92,666,445	80,036,557

**36**

	157,850	61,369
	3,628,860	2,749,950
	3,786,710	2,811,319

**37****38****1**

	17,462,571	66,877,332
	35,194,611	31,828,017
	2,344,557	2,230,427
	19,025,096	24,830,046

40

1

4

41

42

1



44

45

46

---

**48****49****50**

	1,713,452,753	-	306,670,000	1,406,782,753
	10,311,700	-	-	10,311,700
	1,723,764,453			

**53**

--	--	--

## 3

-	2,225,385,083	1,444,366,934	1,882,026,183	1,278,017,434
-	90,021,611	88,149,267	120,255,494	109,120,579
-	316,130,111	264,905,160	185,987,513	157,794,858
	2,631,536,805	1,797,421,361	2,188,269,190	1,544,932,871

## 4

	560,593,017	397,592,790	202,027,941	144,073,390
	441,453	439,935	758,197	848,206
	488,138,573	338,024,460	505,653,389	382,334,604
	835,216,468	561,575,076	645,560,039	436,215,204
	40,688,183	37,388,661	63,757,675	58,668,178
	706,459,111	462,400,439	769,141,272	521,057,788
	-	-	1,370,677	1,735,501
	2,631,536,805	1,797,421,361	2,188,269,190	1,544,932,871

## 5

	1,968,197,580	73.04%
	187,341,912	6.95%
	128,778,605	4.78%
	55,336,263	2.05%
	36,079,866	1.34%
	2,375,734,226	88.16%

55

56

	423,476	223,065	5%
	8,352,420	7,598,697	5%-7%
	3,812,271	3,445,974	3%
	4,433,119	4,203,579	
	17,021,286	15,471,315	--

57

	8,390,483	7,623,072
	9,941,961	6,225,799
	28,239,370	28,559,118
	3,794,927	7,464,581
	4,845,976	4,348,282

---

	2,706,062	1,474,693
	267,076	242,076
	21,634,135	4,134,986
	6,363,056	3,373,968
	57,028,297	33,913,621
	18,866,157	14,913,091
	192,816,152	137,101,404

---

---

**3**

**62**

	-54,924	



**67**

	-49,022	71,135
	-49,022	71,135

**68****1**

	3,584,784
	17,660,586
	6,136,581
	27,381,951

**2**

	36,337,798
	47,477,317
	11,500,915
	31,662,314
	48,249,365
	34,937,284

69

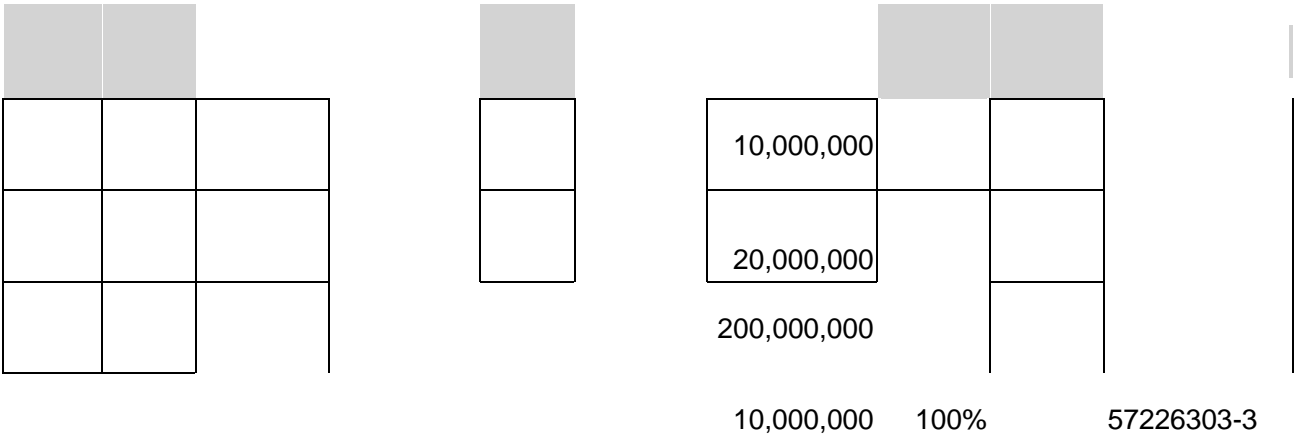
1

1	--	--
	422,154,764	306,780,507
	10,187,347	7,687,723
	82,453,684	60,275,348
	2,930,544	1,483,111
	555,189	505,057
	“	

**3**

	1,041,201,723	954,443,596
	129,510	46,793
	1,041,072,213	954,396,803

2







**3**

			2014 01 01	2014 12 31		450,000
			2014 01 01	2014 12 31		2,799,637



---

		-	250,240
--	--	---	---------

1

2

1

(1)

2014 6 30

(3)

			2013 9 16		
11,000 (	55%)				
2014 6 30		5,500		5,500	
			COMPAGNIAMERCANTILED'OLTREMARES.R.L.		2007
		306		ORG	2014 6
30		109		ORG	
			197		

2

2013 12 31

ORG

1

2

3

1 2014 7  
5,000

2 2014 7  
700

3 2014 7  
300

2012 Tmj EMC /P <</MCID 34 >>BDC /C270 12 Tf 8-2 Tmj EMj EMC /P4

1

2

3

4

5

6

7

	2,966,116	-	-	-	2,985,513
	3,560,231	-	-	-	9,650,548
	55,759,501	-	-	-	61,517,548

8

9

1

1

--	--	--	--

1	593,057,236	100%	-	513,079,299	100%	-
	593,057,236	--	-	513,079,299	--	-

	195,525	195,525	100%	
	160,447	160,447	100%	
	116,334	116,334	100%	

**4**

**5%**

**5%**

5

5

8

2

1

	2,318,196	0.15%	2,318,196	100%	2,318,196	0.15%	2,318,196	100%



**5**

		473,965,777		30.19%
		369,729,779		23.55%
		314,298,934		20.02%
		168,830,320		10.76%
		131,284,075		8.37%
	--	1,458,108,885	--	92.89%

**6**



3

		25,663,044	25,663,044	-	25,663,044	100%	100%		13,755,837	-	-
		10,000,000	10,000,000	-	10,000,000	100%	100%		10,000,000	-	-
		41,319,920	41,319,920	-	41,319,920	100%	100%		-	-	-
		83,344,070	83,344,070	-	83,344,070	100%	100%		-	-	-
		49,371,693	49,371,693	-	49,371,693	100%	100%		-	-	-
		38,573,985	38,573,985	-	38,573,985	100%	100%		-	-	-
ORG		7,458,214	7,458,214	-	7,458,214	51%	51%		7,458,214	-	-
		200,000,000	200,000,000	-	200,000,000	100%	100%		-	-	-
		10,000,000	10,000,000	-	10,000,000	100%	100%		-	-	-
		150,000,000	150,000,000	-	150,000,000	100%	100%				

4

1

	1,194,121,361	1,161,447,528
	55,256,136	53,392,938
	1,249,377,497	1,214,840,466
	867,212,328	888,006,417

2

	1,194,121,361	867,212,328	1,161,447,528	833,382,846
	1,194,121,361	867,212,328		

5

		1,008,450,833	80.72%
		41,402,276	3.31%
		35,014,707	2.80%
		32,700,585	2.62%
		8,889,572	0.71%
		1,126,457,973	90.16%
		--	--
		145,962,896	148,301,230
		4,474.991	7.148.677
		971,093	642,932
		414,783	242,079
	" "	-	47,999
		-	-
		-	-
		25,627,489	17,819,695
		-	-

“ ”	83,546,481	48,630,836
	-455,876	-

**2**

	12.30%	0.69	0.69
	8.80%	0.49	0.49

**3**

1 44.52%

2 1056(.2)T06]ZBM /P A/CID 69 B90 /C20 12 Tf40.8 0 Td[02C8040F3F41605

2014  
2014